

Western Interiors

JANUARY/FEBRUARY 2004

AND DESIGN

SPECIAL SECTION

RESORT LIVING

Luxury properties in Hawaii, Colorado,
Arizona, California, Mexico!

SUN VALLEY colors
modern **TUCSON**

PALM SPRINGS escape
marvelous **MONTECITO**

SANTA FE retreat
astonishing **ASPEN**

\$5.95US \$7.95CAN

02>



0 74820 08565 3



The Inn of the Five Graces

Eastern motifs enliven an intimate hotel in downtown Santa Fe

ASIAN AESTHETICS AND DECOR HAVE LONG BEEN A PART OF SANTA FE'S HISTORY, and The Inn of the Five Graces pays homage to that tradition not only with its name but with an assortment of textiles, furniture and architectural features that have found their way into the New Mexico hotel from the far corners of the world. The inn's name comes from a Tibetan travel custom of presenting five gifts to a holy lama before embarking on a journey. The offerings, symbolic of the five senses, are made in exchange for a blessing.

In 2002, the Garrett Hotel Group purchased the property after David and Christie Garrett spent one night at what was then a bed-and-breakfast. "Almost all of our hotel purchases have been impulsive," says Christie Garrett, who is overseeing the redesign of the inn. "This was certainly no exception." The inn is the first western property for the company, which focuses on running small hotels, all with fewer than fifty rooms. Cornerstones of the group's holdings are Lake Placid Lodge and The Point, two Adirondack camp-style lodges in upstate New York, as well as The Willcox, an elegant hotel in Aiken, South Carolina. "We hope and intend for it to be something truly unique in Santa Fe, offering a more intimate experience than bigger hotels and a higher level of service than smaller ones," adds Garrett.

Nestled in a historic nook of Santa Fe, The Inn of the Five Graces is a hideaway. The compound includes adobe buildings and a 1938 stone house built of rocks taken from the Santa Fe River. Most of the twenty-two suites adjoin interior courtyards filled with Japanese elm trees, plants overflowing ceramic or antique wood planters, fountains, intricately carved wood garden swings and altars— as well as the occasional Buddha peeking out from leaves.

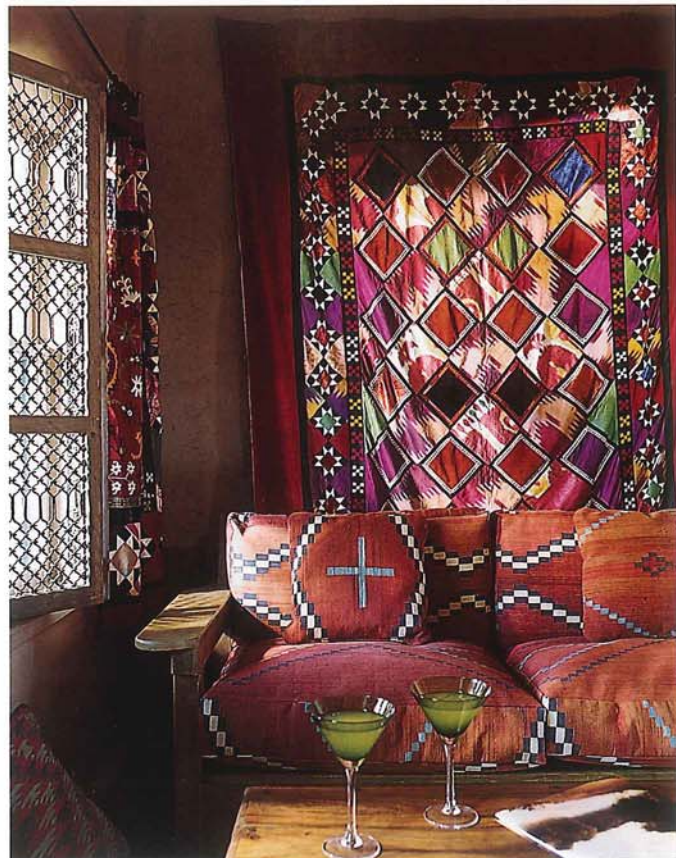
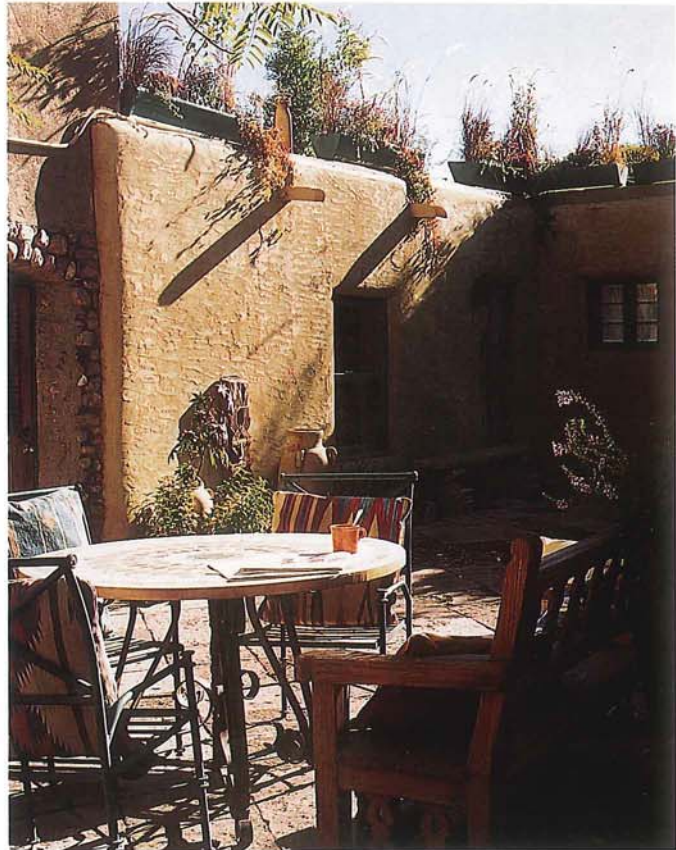
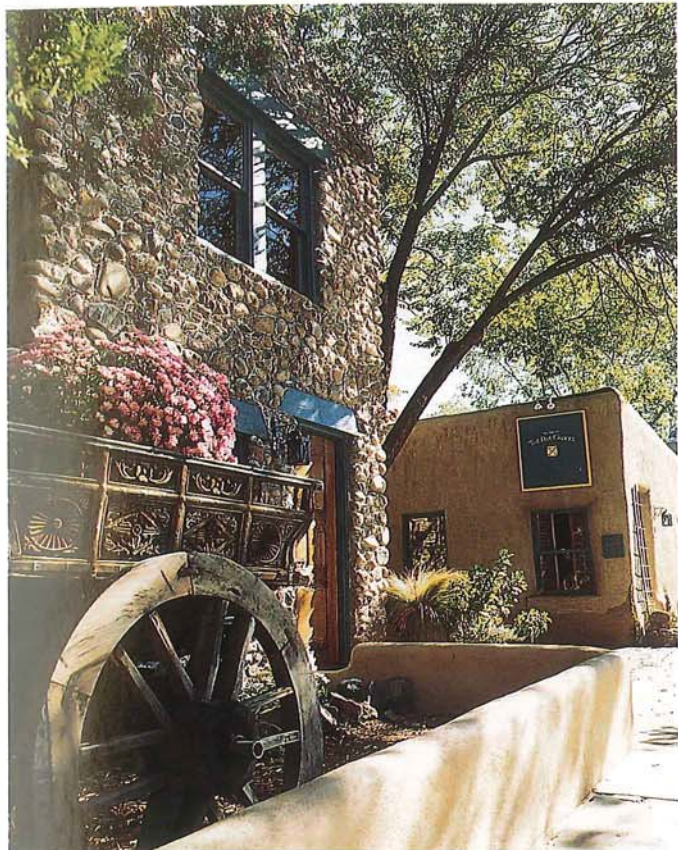
During the Spanish Colonial era Asian textiles, art and furnishings traveled by Spanish galleons across the Pacific Ocean from the Philippines to Mexico and then by mule trains over the dusty trails of the Camino Real into New Mexico. The furnishings inside The Inn of the Five Graces made a similar,

The Inn of the Five Graces in Santa Fe is the first western property in the Garrett Hotel Group's portfolio of boutique hotels, which includes The Point and the Lake Placid Lodge. **opposite:** Most of the twenty-two suites open to courtyards. **above:** Christie Garrett worked with Visions Design Group to update the hotel's original interiors, by Ira and Sylvia Seret.





In one of the suites, a teak mirror from Rajasthan is mixed with an Afghan chest and bed linens and pillow fabric from Jaipur. The headboard upholstery is an antique kilim from Afghanistan. "These pieces work so well in Santa Fe because all the symbols and the geometric patterns have been traveling for thousands of years," says Ira Seret. "They're connected in some way to Southwest style."



clockwise from top left: An antique milk cart from India sits in front of the property's 1938 stone house; the rear courtyard has a stone table from Agra; Uzbek draperies and Indian grillwork in a living room; a swing that once belonged to a maharaja was paired with dhurrie cushions and placed in the front courtyard. opposite: For the baths, Sylvia Seret created murals of Pueblo tile and broken plates from Jaipur. The wood vanity incorporates two-hundred-year-old carvings from Afghanistan, while the sink is a contemporary design from New Mexico.



The Inn of the Five Graces
 150 East DeVargas Street
 Santa Fe, NM 87501
 505.992.0957
www.fivegraces.com

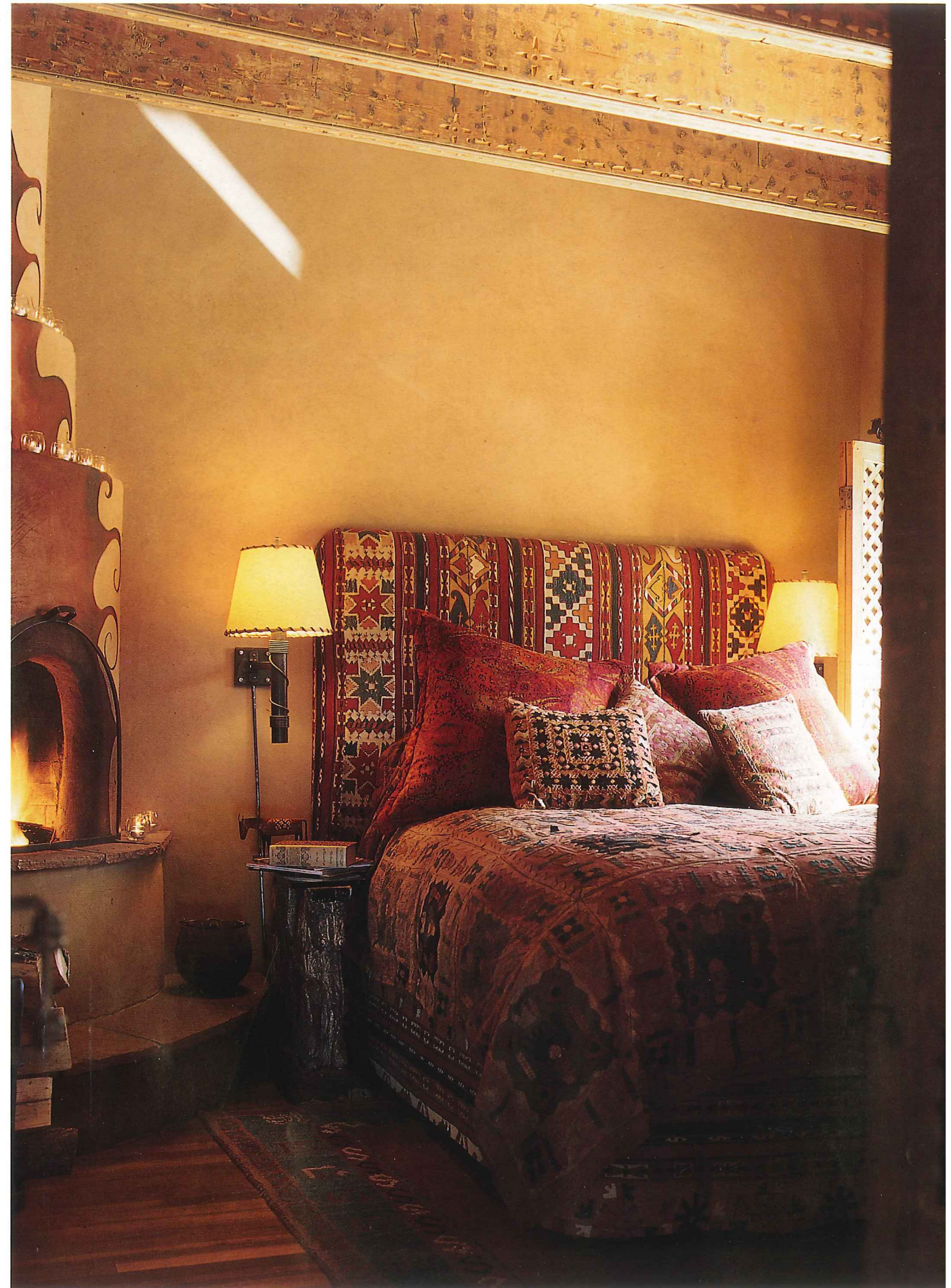
albeit modern, journey to the hotel, brought there by Ira and Sylvia Seret. Both exterior and interior furnishings were initially selected by the Serets, who established a bed-and-breakfast on the site in the mid-1990s, creating an intimate showcase for the furniture and textiles from their Santa Fe store, Seret & Sons. They retrofitted the rooms with wood screens, doors and other amenities, including mirrors, kilims and exotic chests from places like Tibet, Afghanistan and India. Sylvia designed many of the whimsical tile and mosaic patterns in the hotel's kitchens and baths.

Working with David Naylor and Marty Nelson of Visions Design Group in Santa Fe, Christie Garrett plans to expand the baths and reduce the size of the kitchens, remnants of an earlier era when the property was managed as condominiums. "It's still going to be in that Seret and Sons style, using the architecture and fabrics from Afghanistan and India," explains David Naylor. The beds have already been transformed to give them "more of a silky, sumptuous feel," says Christie Garrett. Also in the works is a reception area, which will include a library, breakfast room and bar. "We have ambitious plans for a succession of outdoor garden rooms in the courtyard spaces."

The Inn of the Five Graces fosters a sense of escape, in part by paying particular attention to the needs of its guests. Approximately a week before visitors arrive, they can expect a phone call from Niall Reid, the general manager, who queries them about any needs they might have: whether they want a fireplace, for instance, or what specialty foods or beverages they want in their rooms. Other touches involve the turndown service: In addition to providing a plate of cookies and a dreamcatcher, the hotel delivers a daily planner with a weather forecast and a schedule of exhibitions at nearby museums and film-screening times. Reid, who has no trouble remembering everyone's first name, also offers guests some of the best treasures of Santa Fe, including breakfast breads and pastries from the Sage Bakehouse and temporary gym memberships at Quail Run.

"We're creating a hotel where you can get very involved with the activities and the high energy of Santa Fe and then come back to an almost reclusive home feeling," says Philip Wood, chief operating officer for the hotel group. "It's your enclave. Because you're sort of behind walls in your own private area, you don't need to feel that you're in the middle of all the tourist hubbub." +

above: Among the Serets' specialties are antique doors from around the world. For one of the rooms, they installed a narrow two-hundred-year-old oak piece from Nuristan. **opposite:** The acrylic-and-oil mural on the fireplace in one suite was done by a local artist.



MATERIAL CULTURE pages 31-35. ASN Natural Stone, 800.827.8663, www.asnstone.com; Continental Cut Stone, 254.793.2329, www.continentalcutstone.com; Farnese Gallery, 323.655.1819, www.farnesegallery.com; Malibu Stone, 310.456.9444; Pine's Stone Company, 800.928.2940, www.pinestoneco.com; Rhodes Architectural Stone, 206.709.3000, www.rhodes.org.



MONTECITO MEDITATION pages 60-71. **Clodagh Design**, 670 Broadway, Fourth Floor, New York, NY 10012, 212.780.5300/fax 212.780.5755, www.clodagh.com. **pages 62-63:** Venetian plaster walls by Mark Lentini of B&L Painting, 805.448.7954; Tibetan wool rug from Michaelian & Kohlberg, 212.431.9009, www.michaelian.com; floor lamps by Resolute for 100 Watt Network, 888.477.9288, www.100watt.net; bamboo low table from Interieurs, 212.343.0800, www.interieurs.com; sofa by Clodagh for Dennis Miller



Associates, 212.684.0070, www.dennismiller.com; concrete torchère by Robert Younger for Clodagh Collection, 212.780.5300, www.clodagh.com; upper right: fountain stone from Pierre Lafond, 805.565.1503, www.upstairsatpierrelafond.com. **page 64:** sconces and chandelier by Stephane Pagani for Clodagh Collection, 212.780.5300, www.clodagh.com; light from Cotule Lighting, 718.246.5206; Mesa table and dining chairs by Clodagh for Dennis Miller Associates, 212.684.0070, www.dennismiller.com. **page 65:** brass disk and bench from Martha Sturdy, 604.737.0037, www.marthasturdy.com. **page 66:** Venetian plaster walls by Mark Lentini of B&L Painting, 805.448.7954; limestone tiles from Intertile Distributors, 714.456.9222, www.intertile.com; chair from Tsao & McKown, 212.337.3800, www.tsao-mckown.com; wood stool in guest room from Tucker Robbins, 888.880.6442, www.tuckerrobbins.com; metal cabinetry from David Sims, 805.966.1899; black bamboo in steel trough from Japanache, 310.657.0155, www.styleforliving.com. **page 67:** linens from Anichini, 802.889.9430, www.anichini.com; pillow fabric from Henry Calvin, 888.732.1996, www.henrycalvin.com; wool sisal rug from Patterson Flynn & Martin, 212.688.7700, www.fschumacher.com; wall-mounted reading lights from Nessen, 914.698.7799, www.nessenlighting.com. **page 68:** woven-wood sconces by Kasper Larsen for Clodagh Collection, 212.780.5300, www.clodagh.com; painting by Charles Peters available at Edenhurst Gallery, 800.611.4545, www.edenhurstgallery.com. **pages 70-71:** painting by Alfred Rogoway available at Rogoway's Turquoise Tortoise Galleries, 520.398.2041, www.rogowaygalleries.com.

AN ASPEN INTERVENTION pages 72-81. **Harry Teague, Patrick Leeds, Matt Scholl, Harry Teague Architects**, 412 N. Mill St., Aspen, CO 81611, 970.925.2556/fax 970.925.7981, www.harryteaguearchitects.com. **Julia Marshall, Mt. Daly Enterprises**, 100 N. Third St., #102., Carbondale, CO 81623, 970.963.9896/fax 970.963.5775. **pages 74-75:** black Anthra-Zinc shingles from VM Zinc, 919.874.7173, www.v zinc-us.com; Lueders limestone from Pine's Stone Company, 800.928.2940, www.pinestoneco.com. **page 76:** Lueders limestone floors and walls, yellow lintel and sandstone floors from Pine's Stone Company, 800.928.2940, www.pinestoneco.com; sofas from B&B Italia, 800.872.1697, www.bebitalia.it; lighting from Rambusch Lighting, 212.675.0400, www.rambuschlighting.com;



Harry Teague-designed table. **page 77:** (top) Rody Graumans-designed lighting for The Product Matters from The Lighting Studio, 800.632.8089, www.thelightingstudio.com. (bottom) Sandstone floors from Pine's Stone Company, 800.928.2940, www.pinestoneco.com; sink from Franke, www.franke.com; cooktop and ovens from Dacor, 800.772.7778, www.dacor.com; plumbing fixtures from Dornbracht, www.dornbracht.com; Teague-designed select white maple veneered cabinets from Brown Dog Designs, 970.963.1924. **page 79:** door and windows from Manko Window Systems, 785.776.9643; ceiling fan from Emerson, www.emersonfans.com; red chair from Eames, 800.237.6511, www.eamesoffice.com; corner chair from B&B Italia, 800.872.1697, www.bebitalia.it. **pages 80-81:** black Anthra-Zinc shingles from VM Zinc, 919.874.7173, www.v zinc-us.com; Lueders limestone and limestone bench from Pine's Stone Company, 800-928-2940, www.pinestoneco.com.

THE INN OF THE FIVE GRACES pages 82-89. **The Inn of the Five Graces**, 150 E. DeVargas St., Santa Fe, NM 87501, 505.992.0957/fax 505.955.0549, www.fivegraces.com. **Visions Design Group**, 1807 Second St., Suite 2, Santa Fe, NM 87505, 505.988.3170/fax 505.982.7592, www.visionsdesigngroup.com. All antiques featured available from Ira and Sylvia Seret, Seret & Sons, 224 Galisteo St., Santa Fe, NM 87501, 505.988.9151, www.seretandsons.com. **page 84:** linens from Anichini, 802.889.9430, www.anichini.com. **page 89:** linens from Anichini, 802.889.9430, www.anichini.com.

